

# HOW TO READ YOUR WATER METER

## (FOR RESIDENTS WITH THE NEPTUNE T-10 RADIO READ METER)

The following pages show how to locate the water meter box on your property and read your water meter, as well as explain the functions on your Neptune Radio Read Meters.



Picture above is an example with the display in gallons.  
Actual meter reads will be displayed in units (100 cubic feet) of water.

1. Locate the water meter box on your property. The Box will be located in your front yard near the street.



2. Use the hole in the water box lid to open the water meter box.



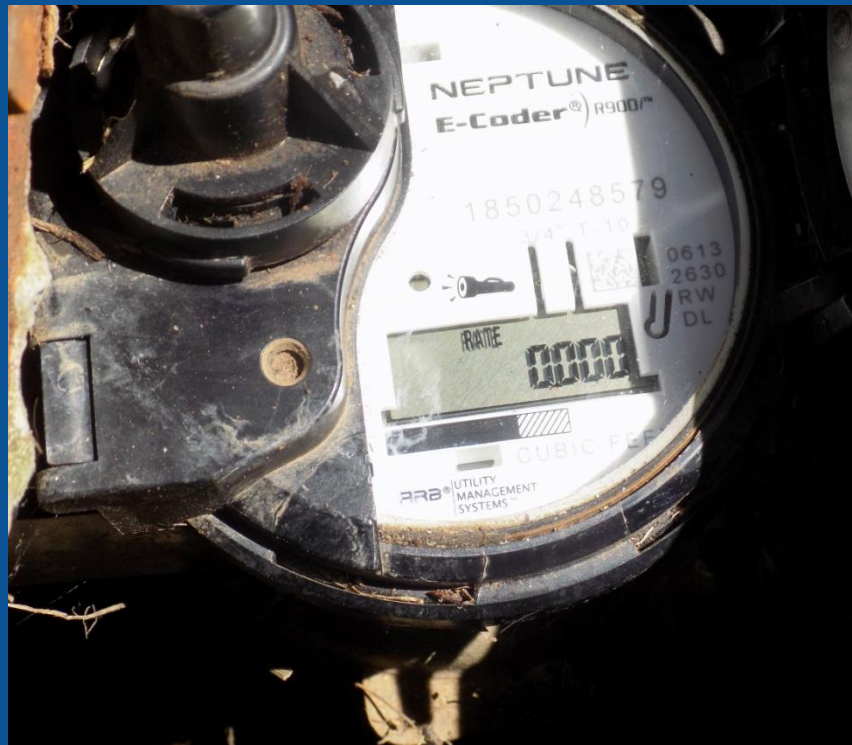
3. Lift the lid of the water meter. This will activate the light sensor on the meter and a set of numbers will appear on the LCD display. The first four numbers, all the way to the left, are your usage. The numbers are shown in units, or cubic feet. Each unit is 100 cubic feet, which is equal to 748 gallons.



To determine your daily water use, read the meter for two consecutive days, and calculate the difference between the two numbers to determine your usage. You may follow the same procedure to calculate your weekly or monthly usage.

As an example, in the photo above the read at the beginning of the month is 0372 units. Thirty days later at the end of the month, the read is 0385 units. Your usage is therefore 13 units, or 9,724 gallons, for the month.

4. The display will alternate between the unit read and the rate of water currently flowing in the house. If there is no water flow, the display will read 0000. Your meter also has a leak indicator that will display potential leaks in your house. You can also determine if you have a leak by turning off all the water faucets and spigots in the house. The rate of flow should read 0000. If there is water flow, you likely have a leak.



The following page explains the features of your Neptune Water Meter in a bit more detail. If you have any questions or concerns regarding your water meter you may call the Public Works Maintenance Division at 707-469-6500.

- Replaceable Battery 1
- Antenna 2
- Light Sensor 3
- Flow Indicators 4
- Date of Manufacture 5
- LCD Display 6
- T-10 Meter 7



	<p><b>LIGHT SENSOR</b> Recessed under the small hole near the center of the faceplate of the E-Coder/R900i, supplies the power for the LCD panel (light activated) as well as the activation of the data logging extraction.</p>
	<p><b>FLOW INDICATOR</b> Shows the direction of flow through the meter:  <b>ON</b> Water in use.  <b>OFF</b> Water not in use.  <b>Flashing</b> Water is running slowly.  <b>(-)</b> Reverse flow.  <b>(+)</b> Forward flow.</p>
	<p><b>LEAK INDICATOR</b> Displays a possible leak:  <b>OFF</b> No leak indicated.  <b>Flashing</b> Intermittent leak indicates that water has been used for at least 50 of the 96 15-minute intervals during a 24-hour period.  <b>On Continuously</b> Indicates water use for all 96 15-minute intervals during a 24-hour period.</p>
<b>RATE</b>	<p><b>RATE OF FLOW</b> Average flow rate is displayed every six seconds on LCD display.</p>
<b>RF LOG</b>	<p><b>DATA LOGGING</b> displayed on LCD during extraction of data logging consumption data.  <b>**"DL" on dial face denotes data logging</b></p>
	<p><b>LCD DISPLAY</b> Nine-digit LCD displays the meter reading in billing units of measure: U.S. gallons, cubic feet, Imperial gallons, or cubic metres.</p> <ul style="list-style-type: none"> <li>1 E-Coder basic reading/customary 6-digit remote reading</li> <li>2 Customary sweep hand digits</li> <li>3 E-CoderPLUS reading (8-digit remote reading)</li> <li>4 Testing units used for diagnostics</li> <li>5 Extended reading units</li> <li>6 Customary billing units</li> </ul>

**TECHNICAL SPECIFICATIONS**

- Electrical Specifications:
  - MIU Power: Lithium battery with capacitor
- Transmitter Specifications:
  - Transmit period: Every 14 seconds
  - Transmitter channels: 50
  - Channel frequency: 910 to 920 MHz spread spectrum
  - Output Power: Meets FCC Part 15.247
  - FCC Verification: Part 15.247
- Environmental Conditions: MIU and E-Coder
  - Operating temperature: -22°F to 149°F (-30°C to 65°C)
  - Storage temperature: -40°F to 158°F (-40°C to 70°C)
  - Operating humidity:
    - Inside Set – 0 to 95%, condensing
    - Pit Set – 100% submersible
- Materials
  - Register housing:
    - Inside Set: Plastic Polycarbonate
    - Pit Set: Roll-sealed copper shell
- Lens:
  - Inside Set: Plastic
  - Pit Set: Glass
- Antennas
  - Inside Set: Fixed antenna
  - Pit Set: Standard whip type  
Optional through-the-lid
    - 18" Coax
    - 6' Coax
    - 20' Coax

**OPTIONS**

- Compatibility
  - Available for all sizes and makes of current Neptune meters
  - Handhelds – Walk-by RF
  - MRX920™ – Mobile RF
  - R900® Gateways
- Units of Measure: U.S. Gallons, Cubic Feet, Imperial Gallons, Cubic Metres

**WARRANTY**

- Register: 20 years (10/10)
- R900 MIU: 20 years (10/10)
- R900 Battery: 20 years (10/10)

Neptune Technology Group Inc.  
 1600 Alabama Highway 229  
 Tallahassee, AL 36078  
 USA  
 Tel: (800) 633-8754  
 Fax: (334) 283-7293

Neptune Technology Group (Canada) Ltd.  
 7275 West Credit Avenue  
 Mississauga, Ontario  
 L5N 5M9  
 Canada  
 Tel: (905) 858-4211  
 Fax: (905) 858-0428

Neptune Technology Group Inc.  
 Ejército Nacional No. 418  
 Piso 12, Desp. 1201-1202  
 Col. Chapultepec Morales  
 Delegación Miguel Hidalgo  
 11570 México, Distrito Federal  
 Tel: (525) 55203 5294 / (525) 55203 5708  
 Fax: (525) 55203 6503

